



**Australian College**  
Empowering Everyone

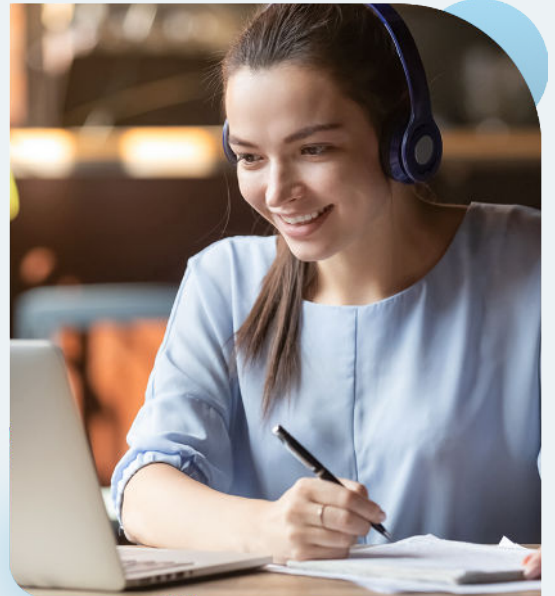


Course Brochure

# Childcare Education and Support

[www.australiancollege.edu.au](http://www.australiancollege.edu.au)

# Why should you choose to study with Australian College?



## ✓ Flexible Learning

- Self paced
- Access your training wherever and whenever suits your lifestyle

## ✓ Unparalleled Support

- Full access to your virtual campus 24/7
- Unlimited trainer, assessor and student services support throughout your studies

## ✓ Payment Plans To Suit You

- Flexible, cost-effective, interest free, payment options
- Price-match opportunity available

## ✓ More Opportunities For You

- Thousands of our students have already graduated with nationally recognised qualifications
- Begin an exciting career with some of the best-known companies in Australia or Internationally
- Own and operate your own business
- Up skill and climb the corporate ladder
- Learn something different and take your hobby to the next level

Join our graduates enjoying successful, exciting careers across many industries.

# Our Courses


Use our key to help you identify where you're at and which course would be suitable for you.

Certificate level	Description
Certificate II	VET education for high school students.
Certificate III	First job or entry into the workforce.
Certificate IV	Already employed in an entry level job and looking to expand your knowledge, move up the corporate ladder.
Diploma	Already working and looking to move into a frontline management role, more senior position, or area of specialisation.

## Accredited Courses

### CHC30121 Certificate III in Early Childhood Education and Care

#### COURSE SUMMARY

<b>Course Code:</b>	CHC30121	<b>Flexible duration:</b>	Up to 18 months
<b>Qualification gained:</b>	Certificate III in Early Childhood Education and Care	<b>Study load:</b>	Self-paced
<b>Nationally recognised:</b>		<b>Start date:</b>	Start anytime

**Delivery Methods:** This course is delivered using an asynchronous study methodology, utilising mainly online delivery (eLearning) of training materials supported with emails and phone calls with the trainer and assessor, on request.

**Study mode:** Flexible delivery (including online with some projects/activities and/or skills-based training)  
There is a work placement requirement of 160 hours (minimum) to successfully complete the course, however, the majority is online so you can study at your own pace in your own time.

**Assessment method:** Short Answer Questions, Case-Studies, Audio/Video (role-plays) and Workplace Practical Activities, Work Placement Workbook.

**Course units:**

- CHCECE055 Meet legal and ethical obligations in children's education and care
- CHCECE056 Work effectively in children's education and care
- HLTWH001 Participate in workplace health and safety
- CHCECE030 Support inclusion and diversity
- CHCECE034 Use an approved learning framework to guide practice
- CHCECE036 Provide experiences to support children's play and learning
- CHCECE037 Support children to connect with the natural environment
- CHCECE038 Observe children to inform practice
- CHCECE054 Encourage understanding of Aboriginal and/or Torres Strait Islander people's cultures
- CHCPRT001 Identify and respond to children and young people at risk
- CHCSAC009 Support the holistic development of children
- CHCECE035 Support the holistic development of children in school age care
- CHCECE032 Nurture babies and toddlers
- CHCECE033 Develop positive and respectful relationships with children
- CHCDIV001 Work with diverse people
- CHCECE031 Support children's health, safety and wellbeing
- HLTAID012\* Provide First Aid in an education and care setting

\*You will need to undertake the first aid course unit externally, in your area and submit a copy of your certification to Australian College.

**Career opportunities:** Childcare Assistant, Early Childhood Educator, Family Day Care Educator, Nanny

#### ENTRY REQUIREMENTS

The training package does not stipulate any mandatory entry requirements for the qualification delivered by this course. The admission criteria are articulated through Australian College marketing and pre-enrolment information and include the following:

- Students will undertake a Language, Literacy and Numeracy review before Australian College accepts their application for enrolment. The student must have a good command of spoken and written English. They must have the skills to understand different numeracy concepts and to read and write a range of business documents and communications.

- Depending on the unit, students may be required to interact with actual or simulated team members, clients and staff and maybe required to participate in audio/video-recorded role-plays with others.
- Students must be at least 16 years of age before the date of enrolment. Where a student is less than 18 years of age, parents or guardians must also provide enrolment consent.

Students must have access to and be able to operate:

- An internet-enabled PC/Laptop or similar running a current operating system (E.g Windows 10 or Mac OSX)
- An audio/video recording device (such as a mobile phone) for the purpose of preparing audio/video assessment recordings
- Microsoft Office (or compatible software)
- Current web browser (e.g., Chrome)
- Adobe Acrobat Reader or another PDF document viewer
- Valid email address

Childcare Work Placement Requirement;

- Working with Children Check (WWCC) or Blue Card (State Specific)
- Health checks (where required by the childcare centre)
- Current immunisation records

### Overseas Students Policy

This course is not available to students on an Overseas Student Visa. As defined in the ESOS Act 2000, 'Overseas students' are not eligible to apply to enrol in this nationally recognised course, nor are they eligible for certification. Please refer to the Enrolment Terms and Conditions.

### COURSE FEES

**Before \$3500 Now only \$2800 \*\***

**PAYMENT OPTION 1** – \$1400 now, \$1400 in a week 2

**PAYMENT OPTION 2** – \$300 deposit then \$50 weekly = \$3100

**PAYMENT OPTION 3** – Completely customise your own payment plan.


**\*20% off already applied. Promo Ends Soon!**

### QUALIFICATION PATHWAYS

This course, CHC30121 Certificate III in Early Childhood Education and Care is a pre-requisite and entry requirement for the CHC50121 Diploma of Early Childhood Education and Care course. Graduates may choose to further their study through enrolment in the CHC50121 Diploma of Early Childhood Education and Care.

## CHC30221 Certificate III in School Based Education Support

### COURSE SUMMARY

<b>Course Code:</b>	CHC30221	<b>Flexible duration:</b>	Up to 18 months
<b>Qualification gained:</b>	Certificate III in School Based Education Support	<b>Study load:</b>	Self-paced
<b>Nationally recognised:</b>		<b>Start date:</b>	Start anytime
<b>Delivery Methods:</b>	This course is delivered using an asynchronous study methodology, utilising mainly online delivery (eLearning) of training materials supported with emails and phone calls with the trainer and assessor, on request.		
<b>Study mode:</b>	Flexible delivery (including online with some projects/activities and/or skills-based training) There is a work placement requirement of 100 hours (minimum) to successfully complete the course, however, the majority is online so you can study at your own pace in your own time.		
<b>Assessment method:</b>	Short Answer Questions, Case-Studies, Audio/Video (recorded) Role-plays and Workplace Practical Activities, Work Placement Workbook.		
<b>Course units:</b>	CHCPRP003 Reflect on and improve own professional practice CHCEDS056 Provide support to students with autism spectrum disorder CHCEDS059 Contribute to the health, safety and wellbeing of students CHCEDS033 Meet legal and ethical obligations in an education support environment CHCEDS034 Contribute to the planning and implementation of educational programs CHCEDS035 Contribute to student education in all developmental domains CHCEDS036 Support the development of literacy and oral language skills CHCEDS037 Support the development of numeracy skills CHCEDS057 Support students with additional needs in the classroom CHCEDS060 Work effectively with students and colleagues		



CHCDIV001 Work with diverse people  
CHCPRT001 Identify and respond to children and young people at risk  
CHCEDS061 Support responsible student behaviour  
HLTAID011\* Provide First Aid  
HLTAID012\* Provide First Aid in an education and care setting

\*You will need to undertake the two first aid courses externally, with a provider of your choice, and submit a copy of your certification to the College. Australian College does not deliver these units.

**Career opportunities:** Teacher's Aide, Teaching Assistant

---

## ENTRY REQUIREMENTS

The training package does not stipulate any mandatory entry requirements for the qualification delivered by this course.

The admission criteria are articulated through Australian College marketing and pre-enrolment information and include the following:

- Students will undertake a Language, Literacy and Numeracy review before Australian College accepts their application for enrolment. The student must have a good command of spoken and written English. They must have the skills to understand different numeracy concepts and to read and write a range of business documents and communications.
- Depending on the unit, students may be required to interact with actual or simulated team members, clients and staff and maybe required to participate in audio/video-recorded role-plays with others.
- Students must be at least 16 years of age before the date of enrolment. Where a student is less than 18 years of age, parents or guardians must also provide enrolment consent.

Students must have access to and be able to operate:

- An internet-enabled PC/Laptop or similar running a current operating system (E.g Windows 10 or Mac OSX)
- An audio/video recording device (such as a mobile phone) for the purpose of preparing audio/video assessment recordings
- Microsoft Office (or compatible software)
- Current web browser (e.g., Chrome)
- Adobe Acrobat Reader or another PDF document viewer
- Valid email address

Childcare Work Placement Requirement;

- Working with Children Check (WWCC) or Blue Card (State Specific)
- Health checks (where required by the childcare centre)
- Current immunisation records

### Overseas Students Policy

This course is not available to students on an Overseas Student Visa. As defined in the ESOS Act 2000, 'Overseas students' are not eligible to apply to enrol in this nationally recognised course, nor are they eligible for certification. Please refer to the Enrolment Terms and Conditions.

---

## COURSE FEES

**Before \$3500 Now only \$2800 \*\***

**PAYMENT OPTION 1** – \$1400 now, \$1400 in a week 2

**PAYMENT OPTION 2** – \$300 deposit then \$50 weekly = \$3100

**PAYMENT OPTION 3** – Completely customise your own payment plan.

**\*20% off already applied. Promo Ends Soon!**


---

## QUALIFICATION PATHWAYS

Upon successful completion of this qualification, you may continue your studies and undertake the following:

- CHC30121 Certificate III in Early Childhood Education and Care
- CHC40221 Certificate IV in School Based Education Support

## COURSE SUMMARY

<b>Course Code:</b>	CHC40221	<b>Flexible duration:</b>	Up to 18 months
<b>Qualification gained:</b>	Certificate IV in School Based Education Support	<b>Study load:</b>	Self-paced
<b>Nationally recognised:</b>		<b>Start date:</b>	Start anytime
<b>Delivery Methods:</b>	This course is delivered using an asynchronous study methodology, utilising mainly online delivery (eLearning) of training materials supported with emails and phone calls with the trainer and assessor, on request.		
<b>Study mode:</b>	Flexible delivery (including online with some projects/activities and/or skills-based training) There is a work placement requirement of 100 hours (minimum) to successfully complete the course, however, the majority is online so you can study at your own pace in your own time.		
<b>Assessment method:</b>	Short Answer Questions, Case-Studies, Audio/Video (recorded) Role-plays and Workplace Practical Activities, Work Placement Workbook.		
<b>Course units:</b>	<p>HLTWHS001 Participate in workplace health and safety</p> <p>BSBHRM413 Support the learning and development of teams and individuals</p> <p>CHCEDS056 Provide support to students with autism spectrum disorder</p> <p>CHCEDS059 Contribute to the health, safety and wellbeing of students</p> <p>CHCPRP003 Reflect on and improve own professional practice</p> <p>CHCDIV001 Work with diverse people</p> <p>CHCECE054 Encourage understanding of Aboriginal and/or Torres Strait Islander peoples' cultures</p> <p>CHCEDS033 Meet legal and ethical obligations in an education support environment</p> <p>CHCEDS045 Support student mathematics learning</p> <p>CHCEDS046 Support student literacy learning</p> <p>CHCEDS047 Assist in facilitation of student learning</p> <p>CHCEDS048 Work with students in need of additional learning support</p> <p>CHCEDS051 Facilitate learning for students with disabilities</p> <p>CHCEDS058 Support the implementation of behaviour plans</p> <p>CHCPR001 Identify and respond to children and young people at risk</p> <p>HLTAID011* Provide First Aid</p> <p>HLTAID012* Provide First Aid in an education and care setting</p> <p>*You will need to undertake the two first aid courses externally, and submit a copy of your certification to Australian College. Australian College does not deliver First Aid courses.</p>		
<b>Career opportunities:</b>	Teachers Aide, Teachers Assistant, Education Support Worker, Learning Support Officer, Education Assistant (special needs/disability), Home Tutor		

## ENTRY REQUIREMENTS

The training package does not stipulate any mandatory entry requirements for the qualification delivered by this course.

The admission criteria are articulated through Australian College marketing and pre-enrolment information and include the following:

- Students will undertake a Language, Literacy and Numeracy review before Australian College accepts their application for enrolment. The student must have a good command of spoken and written English. They must have the skills to understand different numeracy concepts and to read and write a range of business documents and communications.
- Depending on the unit, students may be required to interact with actual or simulated team members, clients and staff and maybe required to participate in audio/video-recorded role-plays with others.
- Students must be at least 16 years of age before the date of enrolment. Where a student is less than 18 years of age, parents or guardians must also provide enrolment consent.

Students must have access to and be able to operate:

- An internet-enabled PC/Laptop or similar running a current operating system (E.g Windows 10 or Mac OSX)
- An audio/video recording device (such as a mobile phone) for the purpose of preparing audio/video assessment recordings
- Microsoft Office (or compatible software)
- Current web browser (e.g., Chrome)
- Adobe Acrobat Reader or another PDF document viewer
- Valid email address

Childcare Work Placement Requirement:

- Working with Children Check (WWCC) or Blue Card (State Specific)
- Health checks (where required by the childcare centre)
- Current immunisation records

## Overseas Students Policy

This course is not available to students on an Overseas Student Visa. As defined in the ESOS Act 2000, 'Overseas students' are not eligible to apply to enrol in this nationally recognised course, nor are they eligible for certification. Please refer to the Enrolment Terms and Conditions.

## COURSE FEES

**Before \$4000 Now only \$3200 \*\***

**PAYMENT OPTION 1** – \$1400 now, \$1400 in a week 2, \$400 in week 3

**PAYMENT OPTION 2** – \$300 deposit then \$50 weekly = \$3600

**PAYMENT OPTION 3** – Completely customise your own payment plan.


\*20% off already applied. Promo Ends Soon!

## QUALIFICATION PATHWAYS

Upon successful completion of this qualification, you may continue your studies and undertake the CHC50121 Diploma of Early Childhood Education and Care

## CHC50121 Diploma of Early Childhood Education and Care

### COURSE SUMMARY

<b>Course Code:</b>	CHC50121	<b>Flexible duration:</b>	Up to 18 months
<b>Qualification gained:</b>	Diploma of Early Childhood Education and Care	<b>Study load:</b>	Self-paced
<b>Nationally recognised:</b>		<b>Start date:</b>	Start anytime
<b>Delivery Methods:</b>	This course is delivered using an asynchronous study methodology, utilising mainly online delivery (eLearning) of training materials supported with emails and phone calls with the trainer and assessor, on request.		
<b>Study mode:</b>	Flexible delivery (including online with some projects/activities and/or skills-based training) There is a work placement requirement of 280 hours (minimum) to successfully complete the course, however, the majority is online so you can study at your own pace in your own time.		
<b>Assessment method:</b>	Short Answer Questions, Case-Studies, Audio/Video (role-plays) and Workplace Practical Activities, Work Placement Workbook.		
<b>Course units:</b>	BSBHRM413 Support the learning and development of teams and individuals CHCECE050 Work in partnership with client's families CHCPRP003 Reflect on and improve your own professional practice BSBTWK502 Manage team effectiveness BSBOPS502 Manage business operational plans CHCECE041 Maintain a safe and healthy environment for children CHCECE042 Foster holistic early childhood CHCECE043 Nurture creativity in children CHCECE044 Facilitate compliance in a children's education and care service CHCECE045 Foster positive and respectful interactions and behaviour in children CHCECE046 Implement strategies for the inclusion of all children CHCECE047 Analyse information to inform children's learning CHCECE048 Plan and implement children's education and care curriculum CHCECE049 Embed environmental responsibility in service operations HLTAID012* Provide First Aid in an education and care setting  *You will need to undertake the first aid course unit externally, in your area and submit a copy of your certification to the College.		
<b>Career opportunities:</b>	Childcare Worker, Childcare Centre Director, Childcare Centre Coordinator, Childcare Centre Manager, Family Day Care Manager		

## ENTRY REQUIREMENTS

The training package does not stipulate any mandatory entry requirements for the qualification delivered by this course.

The admission criteria are articulated through Australian College marketing and pre-enrolment information and include the following:

- Students will undertake a Language, Literacy and Numeracy review before Australian College accepts their application for enrolment. The student must have a good command of spoken and written English. They must have the skills to understand different numeracy concepts and to read and write a range of business documents and communications.

- Depending on the unit, students may be required to interact with actual or simulated team members, clients and staff and maybe required to participate in audio/video-recorded role-plays with others.
- Students must be at least 16 years of age before the date of enrolment. Where a student is less than 18 years of age, parents or guardians must also provide enrolment consent.

Students must have access to and be able to operate:

- An internet-enabled PC/Laptop or similar running a current operating system (E.g Windows 10 or Mac OSX)
- An audio/video recording device (such as a mobile phone) for the purpose of preparing audio/video assessment recordings
- Microsoft Office (or compatible software)
- Current web browser (e.g., Chrome)
- Adobe Acrobat Reader or another PDF document viewer
- Valid email address

Childcare Work Placement Requirement;

- Working with Children Check (WWCC) or Blue Card (State Specific)
- Health checks (where required by the childcare centre)
- Current immunisation records

### **Overseas Students Policy**

This course is not available to students on an Overseas Student Visa. As defined in the ESOS Act 2000, 'Overseas students' are not eligible to apply to enrol in this nationally recognised course, nor are they eligible for certification. Please refer to the Enrolment Terms and Conditions.

---

### **COURSE FEES**

**Before \$4500 Now only \$3600 \*\***

**PAYMENT OPTION 1** – \$1400 now, \$1400 in a week 2

**PAYMENT OPTION 2** – \$1400 now, \$1400 in a week 2, \$800 in week 3

**PAYMENT OPTION 3** – Completely customise your own payment plan.

**\*20% off already applied. Promo Ends Soon!**

---

### **QUALIFICATION PATHWAYS**

Upon successful completion of this qualification, you may continue your studies and undertake a Bachelor of Education (Early Childhood) or Bachelor of Education.





**Australian College**  
Empowering Everyone

**If you have any questions about the College, our courses, or need help with enrolment, please contact us.**



Unit 7 70 Croydon Street  
Cronulla NSW 2230 Australia



General enquiries:  
[enquiry@australiancollege.edu.au](mailto:enquiry@australiancollege.edu.au)



Office hours:  
Mon-Fri 9am-5pm



Payment enquiries:  
[payments@australiancollege.edu.au](mailto:payments@australiancollege.edu.au)



Local call 1300 783 283  
International +61 02 9386 2500



ABN: 79 111 194 015  
RTO: 91110  
Centrelink: 2P721



[www.australiancollege.edu.au](http://www.australiancollege.edu.au)